

FTP Console Manual

Table of Contents

1. Introduction	1
1.1. Open Command Prompt	2
1.2. Start Sysaxftp	2
1.3. Connect to Server	3
1.4. List the contents of directory	4
1.5. Download and Upload a file/folder	5
1.6. Exit from Sysaxftp	7
1.7. List of FTP commands for the Microsoft command-line FTP client	8
2. Supporting Arguments of Sysaxftp	10
2.1. Supporting options in Sysaxftp.exe	11
3. File Transfer Commands	16
3.1. Append a file	17
3.2. Set ASCII transfer type	17
3.3. Beep when command completed	17
3.4. Set BINARY transfer type	18
3.5. Set file transfer type	19
3.6. Get Multiple Files	19
3.7. Send Multiple Files	20
3.8. Receive Files	21
3.9. Send One File	22
3.10. Receive File	23
4. File System Commands	25
4.1. Deleting Commands	26
4.2. Rename Command	28
4.3. Listing Commands	29
4.4. Closing Commands	35
4.5. Creating Folder Command	39
4.6. Sending Arguments Command	40
4.7. Toggle Commands	41
5. PGP Commands	46
5.1. Generating PGP key pairs	47
5.2. Keyrings and key management	48
5.3. Encrypting files with PGP	54
5.4. Decrypting PGP encrypted files	56
6. Other Using Commands	59
6.1. Running Command	60
6.2. Changing Directory Commands	60
6.3. User Commands	62
Index	66

1

Introduction

1.1. Open Command Prompt	2
1.2. Start Sysaxftp	2
1.3. Connect to Server	3
1.4. List the contents of directory	4
1.5. Download and Upload a file/folder	5
1.6. Exit from Sysaxftp	7
1.7. List of FTP commands for the Microsoft command-line FTP client	8

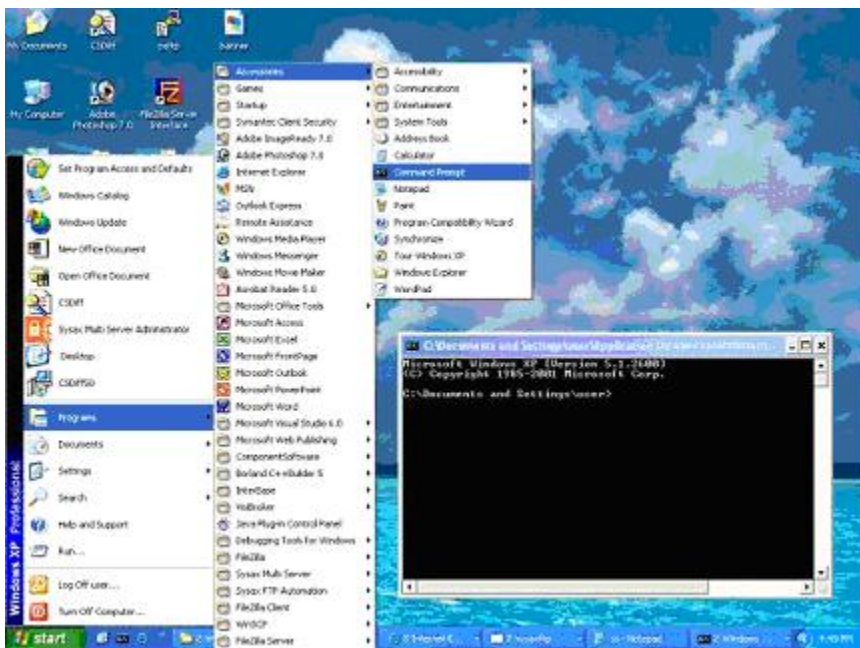
1.1. Open Command Prompt

To open the **Command prompt** from **Task bar**,

1. Click **Start** button on **task bar**.
2. Select **Programs**.
3. Select **Accessories**.
4. Then select **Command Prompt** option.

Then the following figure shows to **how to start Command Console?** from task bar selection.

Figure 1.1. Open command Prompt



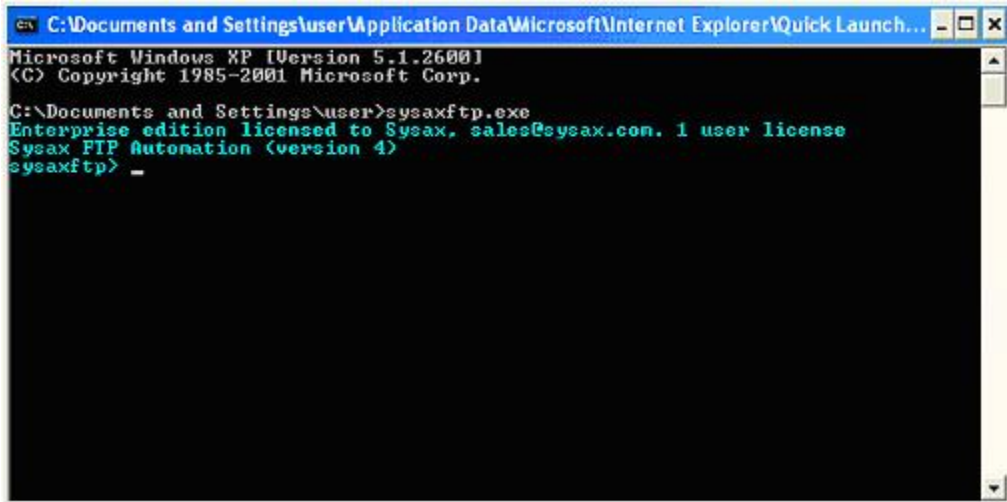
1.2. Start Sysaxftp

To start **sysaxftp.exe** from the **Start** menu selection,

1. Select **Command Prompt** option from **Task bar** selection.
2. Enter **sysaxftp.exe** in command line window.
3. Then after the **Sysaxftp** program was started to run.

The following figure shows **how to start sysaxftp?**

Figure 1.2. Start sysaxftp



```
Microsoft Windows XP [Version 5.1.2600]
(C) Copyright 1985-2001 Microsoft Corp.

C:\Documents and Settings\user>sysaxftp.exe
Enterprise edition licensed to Sysax, sales@sysax.com. 1 user license
Sysax FTP Automation (version 4)
sysaxftp> _
```

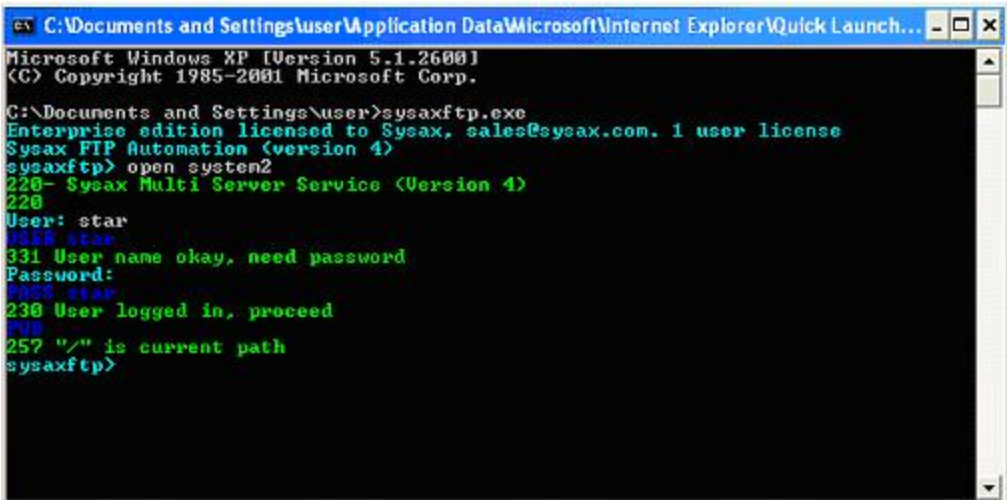
1.3. Connect to Server

The **Sysaxftp** was connected to a **server**, the below steps to be followed.

1. **Start any Server.**
2. Open **Command Prompt** window and then start **Sysaxftp.exe** program.
3. Next, enter the address of **Localhost** to connect a server.
4. Then enter **user** name and **password**.
5. Now the **sysaxftp** was connected to a selected server.

The following figure shows to **how to connect the sysaxftp to a server?**

Figure 1.3. Connect a server



```
C:\Documents and Settings\user\Application Data\Microsoft\Internet Explorer\Quick Launch...
Microsoft Windows XP [Version 5.1.2600]
(C) Copyright 1985-2001 Microsoft Corp.

C:\Documents and Settings\user>sysaxftp.exe
Enterprise edition licensed to Sysax, sales@sysax.com. 1 user license
Sysax FTP Automation (version 4)
sysaxftp> open system2
220- Sysax Multi Server Service (Version 4)
220
User: star
331 User name okay, need password
Password:
230 User logged in, proceed
257 "/" is current path
sysaxftp>
```

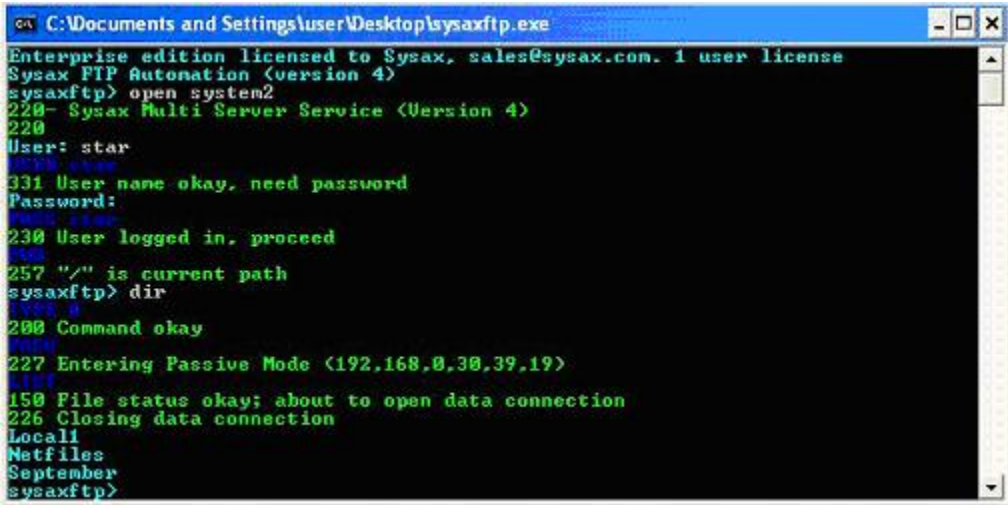
1.4. List the contents of directory

In sysaxftp to list the contents of directory,

1. Start **Sysaxftp.exe**.
2. Then connect User any **server**(SysaxMultiServer/FileZillaServer/..).
3. Then enter the console command of '**dir**' in command prompt window.

The **dir** command is used to list the contents of directory. The following figure shows to **how to list the contents of directory in sysaxftp?**

Figure 1.4. List Directories

A screenshot of a Windows command prompt window titled "C:\Documents and Settings\user\Desktop\sysaxftp.exe". The window displays the following text:

```
Enterprise edition licensed to Sysax, sales@sysax.com. 1 user license
Sysax FTP Automation (version 4)
sysaxftp> open system2
220- Sysax Multi Server Service (Version 4)
220
User: star
331 User name okay, need password
Password:
230 User logged in, proceed
257 "/" is current path
sysaxftp> dir
200 Command okay
227 Entering Passive Mode (192,168,0,30,39,19)
150 File status okay; about to open data connection
226 Closing data connection
Local1
Netfiles
September
sysaxftp>
```

1.5. Download and Upload a file/folder

Running a script from the sysaxftp command line

An **Sysaxftp** can be run from the command line using the **-script** switch.

The Syntax is:

Exhibit 1.1. Syntax of Running a script

```
sysaxftp -script [script file name]
```

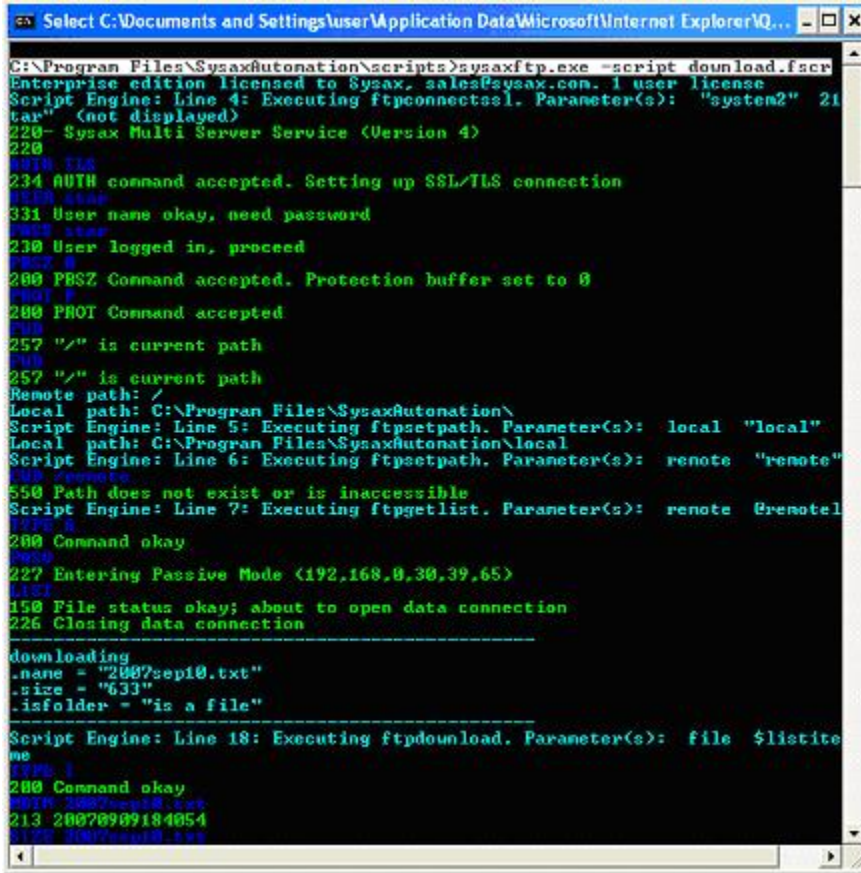
Download a file/folder

To download a file using sysaxftp,

1. Create and save a script for **download**.
2. Open the command prompt window.

3. Choose the particular path of script file for download.
4. Then run the above script file(download.fscr).

Figure 1.5. Downloading files



```
C:\Program Files\SysaxAutomation\scripts>sysaxftp.exe -script download.fscr
Enterprise edition licensed to Sysax, sales@sysax.com. 1 user license
Script Engine: Line 4: Executing ftpconnectssl. Parameter(s): "system2" 21
tar" (not displayed)
220- Sysax Multi Server Service (Version 4)
220
234 AUTH command accepted. Setting up SSL/TLS connection
331 User name okay, need password
230 User logged in, proceed
200 PBSZ Command accepted. Protection buffer set to 8
200 PROT Command accepted
257 "/" is current path
257 "/" is current path
Remote path: /
Local path: C:\Program Files\SysaxAutomation\
Script Engine: Line 5: Executing ftpsetpath. Parameter(s): local "local"
Local path: C:\Program Files\SysaxAutomation\local
Script Engine: Line 6: Executing ftpsetpath. Parameter(s): remote "remote"
550 Path does not exist or is inaccessible
Script Engine: Line 7: Executing ftpgetlist. Parameter(s): remote @remote1
200 Command okay
227 Entering Passive Mode (192,168,0,30,39,65)
150 File status okay; about to open data connection
226 Closing data connection
-----
downloading
.name = "2007sept0.txt"
.size = "633"
.isfolder = "is a file"
-----
Script Engine: Line 18: Executing ftpdownload. Parameter(s): file $listite
me
1170 2007sept0.txt
200 Command okay
213 20070909184054
1170 2007sept0.txt
```

Upload a file/folder

To upload a file using sysaxftp,

1. Create and save a script for **upload**.
2. Open the command prompt window.
3. Choose the particular path of script file for upload.

4. Then run the above script file(upload.fscr).

Figure 1.6. Uploading files

```

C:\Program Files\SysaxAutomation\scripts>sysaxftp -script upload.fscr
Enterprise edition licensed to Sysax, sales@sysax.com. 1 user license
Script Engine: Line 13: Executing strprint. Parameter(s): ~m_ul_remot
Script Engine: Line 14: Executing strprint. Parameter(s): ~m_ul_local
Script Engine: Line 15: Executing strprint. Parameter(s): ~m_ul_remot
Script Engine: Line 16: Executing strprint. Parameter(s): ~m_ul_local
Script Engine: Line 25: Executing setduperules. Parameter(s): hysize
kip rename ".0503"
Script Engine: Line 31: Executing enablepasv
Script Engine: Line 40: Executing ftpconnect. Parameter(s): "system2"
ri" <not displayed>
220- Sysax Multi Server Service <Version 4>
220
331 user1
331 User name okay, need password
332 pass1
230 User logged in, proceed
328
257 "/" is current path
328
257 "/" is current path
Remote path: /
Local path: C:\Program Files\SysaxAutomation\
Script Engine: Line 45: Executing ftpsetpath. Parameter(s): local "n
ath
Local path: C:\Program Files\SysaxAutomation
Script Engine: Line 46: Executing ftpsetpath. Parameter(s): remote ~
epath
328 /
250 Path changed to "/"
328
257 "/" is current path
Remote path: /
Script Engine: Line 51: Executing ftpgetlist. Parameter(s): local @l
Successfully obtained local folder listing
Script Engine: Line 52: Executing ftpgetlist. Parameter(s): remote @
t
328 @
200 Command okay
328
227 Entering Passive Mode (192,168,0,30,39,72)
328
150 File status okay; about to open data connection
226 Closing data connection
Script Engine: Script execution complete
C:\Program Files\SysaxAutomation\scripts>

```

1.6. Exit from Sysaxftp

To exit from **sysaxftp**,

Just enter the console command of 'bye' in sysaxftp command line window.

The the command prompt will be displayed as follows(Figure1.7):

Figure 1.7. Exit from Sysaxftp

```

Microsoft Windows XP [Version 5.1.2600]
(C) Copyright 1985-2001 Microsoft Corp.

C:\Documents and Settings\user>ftp
ftp> open system2
Connected to system2.
220- Sysax Multi Server Service (Version 4)
220
User (system2:(none)): star
331 User name okay, need password
Password:
230 User logged in, proceed
ftp> bye
221 Service closing control connection

C:\Documents and Settings\user>_

```

1.7. List of FTP commands for the Microsoft command-line FTP client

Command-line options

As you are strating the program from a **Dos Prompt**:

Exhibit 1.2. Start a program from Dos prompt

```
ftp [-v] [-d] [-i] [-n][ -g] [-s:filename] [-a] [-w:window size][computer]
```

- **-v** : Suppresses verbose display of remote server responses.
- **-n** : Suppresses **auto-login** upon initial connection.
- **-i** : Turns off interactive prompt during multiple file transfers.
- **-d** : Enables debug, displaying all ftp commands passed between the client and server.
- **-g** : Disables filename glob which permits the use of wildcard characters in local file and path names.

Introduction

- **-s:filename** : Specifies a text file containing ftp commands; the coimmands will automatically run after ftp starts. No spaces are allowed in this parameter. Use this switch instead of redirection(>).
- **-a** : Use any local interface when binding data connection.
- **-w:window size** : Overrides the default transfer buffer size of **4096**.
- **computer** : Specifies the computer name or IP address of the remote computer to connect to. The computer, if specified, must be the last parameter on the line.

2

Supporting Arguments of Sysaxftp

2.1. Supporting options in Sysaxftp.exe	11
---	----

2.1. Supporting options in Sysaxftp.exe

SSL:

SSL stands for **Security Socket Layer**. Websites use SSL to establish secure, authentication sessions between the client and server. In sysaxftp.exe the SSL connection is used by the following order.

Exhibit 2.1. Connect SSL

```
>sysaxftp.exe -ssl
```

Now the SSL connection was connected for both server and client.

SSH:

SSH File Transfer Protocol provides secure file transfer functionality over any reliable data stream. It is the standard file transfer protocol for use with the SSH2 protocol. While connecting the SSH connection in sysaxftp.exe the following order can be used.

Exhibit 2.2. Connect SSH

```
>sysaxftp.exe -ssh
```

Script:

Scripts may be executed from the command line, scheduled as one-time/recurring tasks, or called from other scripts. An FTP script can be run from command line by using the following format.

Exhibit 2.3. Run a script

```
C:\Program Files\SysaxAutomation\scripts>sysaxftp.exe -script  
[script_filename]
```

Log:

The 'Log' option is used to generate the log files for running scripts.

Exhibit 2.4. Use Log option

```
C:\Program Files\SysaxAutomation\scripts>sysaxftp.exe -script  
[script_name] -log ["script_name"].log.
```

Tslogfile:

The 'tslogfile' option is used to generate a time stamped output logfile.

Exhibit 2.5. Use Tslogfile option

```
C:\Program Files\SysaxAutomation\scripts>sysaxftp.exe -script  
[script_name] -tslogfile ["script_name"].log.
```

Logfile:

The 'logfile' option is used to generate an output logfile.

Exhibit 2.6. Use Logfile option

```
C:\Program Files\SysaxAutomation\scripts>sysaxftp.exe -script  
[script_name] -logfile ["script_name"].log.
```

Nopasv:

Files may be transferred using server initiated(port) or client initiated(pasv) data connections. The 'nopasv' option enables port data connections. Also it do not apply to SSH based SFTP file transfers.

Exhibit 2.7. Use Nopasv option

```
C:\Program Files\SysaxAutomation\scripts>sysaxftp.exe -script  
[script_name] -nopasv.
```

Nocolor:

The 'nocolor' option is used to any other colors didn't display in the command prompt window.

Exhibit 2.8. Use Nocolor option

```
C:\Program Files\SysaxAutomation\scripts>sysaxftp.exe -nocolor.
```

Append:

Append to log file generated during previous run.

Exhibit 2.9. Use Append option

```
C:\Program Files\SysaxAutomation\scripts>sysaxftp.exe -script  
[script_name] -append.
```

Rollover:

Roll over the log file after the maximum file size specified in bytes.

Exhibit 2.10. Use Rollover option

```
C:\Program Files\SysaxAutomation\scripts>sysaxftp.exe -script  
[script_name] -rollover.
```

Set:

This option is to give by the following order.

Exhibit 2.11. Use Set option

```
C:\Program Files\SysaxAutomation\scripts>sysaxftp.exe -set.
```

Loadlic:

This option is to give by the following order.

Exhibit 2.12. Use Loadlic option

```
C:\Program Files\SysaxAutomation\scripts>sysaxftp.exe -loadlic.
```

Nonlst:

The 'nonlst' option is giving to under the following order.

Exhibit 2.13. Use Nonlst option

```
C:\Program Files\SysaxAutomation\scripts>sysaxftp.exe -nonlst.
```

3

File Transfer Commands

3.1. Append a file	17
3.2. Set ASCII transfer type	17
3.3. Beep when command completed	17
3.4. Set BINARY transfer type	18
3.5. Set file transfer type	19
3.6. Get Multiple Files	19
3.7. Send Multiple Files	20
3.8. Receive Files	21
3.9. Send One File	22
3.10. Receieve File	23

3.1. Append a file

The **append** Appends a local file to a file on the remote computer using the current file type setting. This command is followed by the parameters are 'local-file and remote-file'. The local-file specifies the local file to add and the remote-file specifies the file on the remote computer to which local-file will be added. If remote-file is omitted, the local filename is used for the remote filename.

The Syntax is

Exhibit 3.1. Syntax of "append" command

```
append local-file [remote-file]
```

3.2. Set ASCII transfer type

The **ascii** Sets the file transfer type to ASCII, the default.

Note: FTP supports two file transfer types, ASCII and binary image. ASCII should be used when transferring text files. See also binary. In ASCII mode, character conversions to and from the network standard character set are performed. For example, end-of-line characters are converted as necessary, based on the target operating system.

The Syntax is:

Exhibit 3.2. Syntax of "ascii" command

```
ascii
```

3.3. Beep when command completed

The **bell** Toggles a bell to ring after each file transfer command is completed. By default, the bell is off.

The Syntax is:

Exhibit 3.3. Syntax of "bell" command

```
bell
```

The example is

Exhibit 3.4. Example of "bell" command

```
sysaxftp> bell  
Bell mode On .  
  
sysaxftp> bell off  
Bell mode Off .
```

3.4. Set BINARY transfer type

Sets the file transfer type to binary.

Note: FTP supports two file transfer types, ASCII and binary image. Binary should be used when transferring executable files. In binary mode, the file is moved byte-by-byte. See also `ascii`.

The Syntax is

Exhibit 3.5. Syntax of "binary" command

```
binary
```

3.5. Set file transfer type

The **type** Sets or displays the file transfer type. This command is followed by the parameter 'Type-name'. Type-name specifies the file transfer type; the default is ASCII. If type-name is not specified, the current type is displayed.

Note: FTP supports two file transfer types, ASCII and binary image. ASCII should be used when transferring text files. In ASCII mode, character conversions to and from the network standard character set are performed. For example, end-of-line characters are converted as necessary, based on the destination's operating system. Binary should be used when transferring executable files. In binary mode, the file is moved byte-by-byte.

The Syntax is

Exhibit 3.6. Syntax of "type" command

```
type [type-name]
```

The example is

Exhibit 3.7. Example of "type" command

```
sysaxftp> type  
  
Using ascii mode to transfer files.  
  
sysaxftp>
```

3.6. Get Multiple Files

The **mget** Copies one or more remote files to the local computer using the current file transfer type. In this command contained the parameter was 'remote-files'. It specifies the remote file(s) to the local computer.

The Syntax is

Exhibit 3.8. Syntax of "mget" command

```
mget remote-files [,,,]
```

The example is

Exhibit 3.9. Example of "mget" command

```
ftp> mget  
  
Remote files 2007sep22.txt  
mget 2007sep22.txt?  
mget 2007sep24.txt?  
mget 2007sep25.txt?  
mget 2007sep26.txt?  
  
ftp>
```

3.7. Send Multiple Files

The **mput** Copies one or more local files to the remote computer using the current file transfer type. This command is followed by the parameter 'local-files'. The local-files specifies the local files to copy to the remote computer.

The Syntax is

Exhibit 3.10. Syntax of "mput" command

```
mput local-files [,,,]
```

The example is

Exhibit 3.11. Example of "mput" command

```
ftp> put

Local file msg.txt
Remote file dbg4.txt
200 Command okay
150 File status okay; about to open data connection
226 Closing data connection
ftp: 140 bytes sent in 0.00Seconds 140000.00Kbytes/sec.

ftp>
```

3.8. Receive Files

The **get** Copies a remote file to the local computer using the current file transfer type. See also **mget**, which can copy multiple files. In this command contained the parameter are 'remote-file and local-file. The remote-file specifies the remote file to copy and the local-file specifies the name to use on the local computer. If not specified, the file is given the remote-file name.

The Syntax is

Exhibit 3.12. Syntax of "get" command

```
get remote-file [local-file]
```

The example is

Exhibit 3.13. Example of "get" command

```
sysaxftp> get 2007sep20.txt

TYPE I
200 Command okay
MDTM 2007sep20.txt
213 20070919191300
PASV
227 Entering Passive Mode (192,168,0,30,19)
RETR 2007sep20.txt
150 File status okay; about to open data connection
226 Closing data connection

sysaxftp>
```

3.9. Send One File

The **put** Copies a local file to the remote computer using the current file transfer type. See also **mput**, which can copy multiple files. This command followed by the parameters are 'local-file and remote-file'. The local-file specifies the local file to copy and the remote-file specifies the name to use on the remote computer. If not specified, the file is given the local-file name.

The Syntax is

Exhibit 3.14. Syntax of "put" command

```
put local-file [remote-file]
```

The example is

Exhibit 3.15. Example of "put" command

```
ftp> put

Local file msg.txt
Remote file dbg4.txt
200 Command okay
150 File status okay; about to open data connection
226 Closing data connection
ftp: 140 bytes sent in 0.00Seconds 140000.00Kbytes/sec.

ftp>
```

3.10. Receive File

The **recv** Copies a remote file to the local computer using the current file transfer type. Recv is identical to get. This command followed by the parameters are 'remote-file and local-file'. The remote-file specifies the remote file to copy and the local-file specifies the name to use on the local computer. If not specified, the file is given the remote-file name.

The Syntax is

Exhibit 3.16. Syntax of "recv" command

```
recv remote-file [local-file]
```

The example is

Exhibit 3.17. Example of "recv" command

```
sysaxftp> recv  
  
Remote file: msg.txt  
Local file: msg.txt  
TYPE I  
200 Command okay  
MDTM msg.txt  
213 20040420214244  
SIZE msg.txt  
213 1452  
PASV  
227 Entering Passive Mode (192,168,0,46,39,19)  
RETR msg.txt  
150 File status okay; about to open data connection  
226 Closing data connection  
  
sysaxftp>
```

4

File System Commands

4.1. Deleting Commands	26
4.2. Rename Command	28
4.3. Listing Commands	29
4.4. Closing Commands	35
4.5. Creating Folder Command	39
4.6. Sending Arguments Command	40
4.7. Toggle Commands	41

4.1. Deleting Commands

4.1.1. Delete Remote File

The **delete** Deletes a single file on a remote computer. See also **mdelete**, which can delete multiple files. This command is followed by the parameter 'remote-file'. It specifies the file to delete.

The Syntax is

Exhibit 4.1. Syntax of "delete" command

```
delete remote-file
```

The example is

Exhibit 4.2. Example of "delete" command

```
sysaxftp> delete 2007sep8.txt  
  
DELE 2007sep8.txt  
250 Deleted "/2007sep8.txt"  
  
sysaxftp>
```

4.1.2. Delete Multiple Files

The **mdelete** Deletes one or more files on a remote computer. In this command is followed by the parameter 'remote-files'. It specifies the remote files to delete.

The Syntax is

Exhibit 4.3. Syntax of "mdelete" command

```
mdelete remote-files [,,,]
```

The example is

Exhibit 4.4. Example of "mdelete" command

```
sysaxftp> mdelete

Remote Files 2007sep22.txt
200 Command okay
mdelete 2007sep24.txt?
250 Deleted "/2007sep24.txt"
mdelete 2007sep22.txt?
250 Deleted "/2007sep22.txt"
mdelete 2007sep25.txt?
250 Deleted "/2007sep25.txt"

sysaxftp>
```

4.1.3. Remote directory on the Remote machine

The **rmdir** Deletes a remote directory.This command is followed by the parameter 'directory'. The directory specifies the name of the remote directory to delete.

The Syntax is

Exhibit 4.5. Syntax of "rmdir" command

```
rmdir directory
```

The example is

Exhibit 4.6. Example of "rmdir" command

```
sysaxftp>rmdir
Directory name: W:\remote
CWD /w:/remote
250 Path changed to "/"
PWD
257 "/" is current path
TYPE A
200 Command okay
PASV
227 Entering Passive Mode (169,254,103,252,39,17)
LIST
150 File status okay; about to open data connection
226 Closing data connection
DELE 2007sep22.txt
250 Deleted "/2007sep22.txt"
DELE 2007sep24.txt
250 Deleted "/2007sep24.txt"
DELE 2007sep25.txt
250 Deleted "/2007sep25.txt"
DELE 2007sep26.txt
250 Deleted "/2007sep26.txt"
DELE NTUSER.DAT
250 Deleted "/NTUSER.DAT"

sysaxftp>
```

4.2. Rename Command

The **rename** Renames remote files. It contains the parameters are 'filename and newfilename'. The filename specifies the file you want to rename and the newfilename specifies the new filename.

The Syntax is

Exhibit 4.7. Syntax of "rename" command

```
rename filename newfilename
```

The example is

Exhibit 4.8. Example of "rename" command

```
sysaxftp> rename 2007sep20.txt star_unit  
  
RNFR /2007sep20.txt  
350 Requested file action pending further information  
RNTO /star_unit  
250 Renamed to "/star_unit"  
  
sysaxftp>
```

4.3. Listing Commands

4.3.1. List contents of remote directory

The **dir** Displays a list of a remote directory's files and subdirectories. See also **mdir**, which can list multiple directories. It followed by the parameters are 'remote-directory and local-file'. The remote-directory specifies the directory for which you want to see a listing. If no directory is specified, the current working directory on the remote computer is used and the local-file specifies a local file to store the listing. If not specified, output is displayed on the screen.

The Syntax is

Exhibit 4.9. Syntax of "dir" command

```
dir [remote-directory] [local-file]
```

The example is

Exhibit 4.10. Example of "dir" command

```
sysaxftp> dir

TYPE A
200 Command okay
PASV
227 Entering Passive Mode (192,168,0,30,39,18)
LIST
150 File status okay; about to open data connection
226 Closing data connection
2007sep12.txt
2007sep17.txt
2007sep18.txt
2007sep19.txt
2007sep20.txt
2007sep21.txt

sysaxftp>
```

4.3.2. List contents of multiple remote directories

The **mdir** Displays a list of a remote directory's files and subdirectories. Mdir allows you to specify multiple files. This command is to follow by the parameter are 'remote-files and local-files'. The remote-files specifies the directory for which you want to see a listing. Remote-files must be specified; type "-" to use the current working directory on the remote computer and the local-files specifies a local file to store the listing. Type "-" to display the listing on the screen.

The Syntax is

Exhibit 4.11. Syntax of "mdir" command

```
mdir remote-files [,,,] local-file
```

The example is

Exhibit 4.12. Example of "mdir" command

```
ftp> mdir

Remote files 2007sep22.txt
Local file command.txt
output to local-file: command.txt?
200 Command okay
150 File status okay; about to open data connection
226 Closing data connection
ftp: 332 bytes received in 0.03Seconds 10.71Kbytes/sec.

ftp>
```

4.3.3. List contents of remote directory

The **ls** Displays an abbreviated list of a remote directory's files and subdirectories. This command is followed by the parameters are 'remote-directory and local-file'. The remote-directory specifies the directory for which you want to see a listing. If no directory is specified, the current working directory on the remote computer is used and the local-file specifies a local file to store the listing. If not specified, output is displayed on the screen.

The Syntax is

Exhibit 4.13. Syntax of "ls" command

```
ls [remote-directory] [local-file]
```

Exhibit 4.14. table title

```
sysaxftp> ls

TYPE A
200 Command okay
PASV
227 Entering Passive Mode (192,168,0,30,39,21)
LIST
150 File status okay; about to open data connection
226 Closing data connection
2007sep12.txt
2007sep17.txt
2007sep19.txt
star_unit

sysaxftp>
```

4.3.4. List contents of multiple remote directories

The **mls** Displays an abbreviated list of a remote directory's files and subdirectories. This command followed by the parameters are 'remote-files and local-file'. The remote-files specifies the files for which you want to see a listing. Remote-files must be specified; type "-" to use the current working directory on the remote computer and the local-file specifies a local file to store the listing. Type "-" to display the listing on the screen.

The Syntax is

Exhibit 4.15. Syntax of "mls" command

```
mls remote-files [,,,] local-file
```

The example is

Exhibit 4.16. Example of "mls" command

```
sysaxftp> mls

Remote files 2007sep12.txt,2007sep13.txt
Local file msg.txt
output to local-file: msg.txt?
200 Command okay
150 File status okay; about to open data connection
226 Closing data connection
sysaxftp: 130 bytes received in 0.03Seconds 4.19Kbytes/sec.

sysaxftp>
```

4.3.5. Send One File

The **send** Copies a local file to the remote computer using the current file transfer type. Send is identical to put. This command followed by the parameters are 'local-file and remote-file'. The local-file specifies the local file to copy and the remote-file specifies the name to use on the remote computer. If not specified, the file is given the local-file name.

The Syntax is

Exhibit 4.17. Syntax of "send" command

```
send local-file [remote-file]
```

The example is

Exhibit 4.18. Example of "send" command

```
sysaxftp> send

Local file: 2008jan17.txt
Remote file: Normal.txt
TYPE I
200 Command okay
SIZE Normal.txt
213 3942
PASV
227 Entering Passive Mode (192,168,0,46,39,17)
STOR Normal.txt
150 File status okay; about to open data connection
226 Closing data connection
MDTM 20080116200858 Normal.txt
200 File time set

sysaxftp>
```

4.3.6. Show Current Status

The **status** Displays the current status of FTP connections and toggles.

The Syntax is

Exhibit 4.19. Syntax of "status" command

```
status
```

The example is

Exhibit 4.20. Example of "status" command

```
sysaxftp> status

connected to system3
type: ascii; Verbose: On; Bell: Off; Prompting: On; Globbing: On;
Debugging: Off; Hash mark printing: Off;

sysaxftp>
```

4.3.7. Print working directory on remote machine

The **pwd** Displays the current directory on the remote computer.

The Syntax is

Exhibit 4.21. Syntax of "pwd" command

```
pwd
```

The example is

Exhibit 4.22. Example of "pwd" command

```
sysaxftp> pwd

PWD
257 "/" is current path

sysaxftp>
```

4.4. Closing Commands

4.4.1. Terminate FTP session and Exit

The **bye** Ends the FTP session with the remote computer and exits ftp.

The Syntax is

Exhibit 4.23. Syntax of "bye" command

```
bye
```

The example is

Exhibit 4.24. Example of "bye" command

```
sysaxftp> open system2
220- Sysax Multi Server Service [version 4]
220
User: star
USER star
331 User name okay, need password
Password:
PASS star
230 User logged in, proceed
PWD
257 "/" is current path
sysaxftp> bye

C:\Documents and Settings\user>
```

4.4.2. Terminate FTP session

The **close** Ends the FTP session with the remote server and returns to the command interpreter.

The Syntax is

Exhibit 4.25. Syntax of "close" command

```
close
```

The example is

Exhibit 4.26. Example of "close" command

```
sysaxftp> open system2
220- Sysax Multi Server Service [version 4]
220
User: star
USER star
331 User name okay, need password
Password:
PASS star
230 User logged in, proceed
PWD
257 "/" is current path
sysaxftp> close
QUIT

sysaxftp>
```

4.4.3. Terminate FTP session

The **disconnect** Disconnects from the remote computer, retaining the ftp prompt.

The Syntax is

Exhibit 4.27. Syntax of "disconnect" command

```
disconnect
```

The **disconnect** Disconnects from the remote computer, retaining the ftp prompt.

The example is

Exhibit 4.28. Example of "disconnect" command

```
sysaxftp> open system2
220- Sysax Multi Server Service [version 4]
220
User: star
USER star
331 User name okay, need password
Password:
PASS star
230 User logged in, proceed
PWD
257 "/" is current path
sysaxftp> disconnect
QUIT

sysaxftp>
```

4.4.4. Terminate FTP session and Exit

The **quit** Ends the FTP session with the remote computer and exits ftp.

The Syntax is

Exhibit 4.29. Syntax of "quit" command

```
quit
```

The example is

Exhibit 4.30. Example of "quit" command

```
sysaxftp> open system2

220- Sysax Multi Server Service [version 4]
220
User: star
USER star
331 User name okay, need password
Password:
PASS star
230 User logged in, proceed
PWD
257 "/" is current path
sysaxftp> quit

C:\documents and Settings\user>
```

4.5. Creating Folder Command

The **mkdir** Creates a remote directory. It contained the parameter was 'directory'. The directory specifies the name of the new remote directory.

The Syntax is

Exhibit 4.31. Syntax of "mkdir" command

```
mkdir directory
```

The example is

Exhibit 4.32. Example of "mkdir" command

```
sysaxftp> mkdir

Directory name: star
MKD /star
257 "/star" created

sysaxftp>
```

4.6. Sending Arguments Command

4.6.1. Send Arbitrary FTP command

The **literal** Sends arguments, verbatim, to the remote FTP server. A single FTP reply code is expected in return. This command is followed by the parameter 'argument'. It specifies the argument to send to the FTP server.

The Syntax is

Exhibit 4.33. Syntax of "literal" command

```
literal argument [,,,]
```

The example is

Exhibit 4.34. Example of "literal" command

```
sysaxftp> literal

Command line to send: K

sysaxftp>
```

4.6.2. Send Arbitrary FTP command

The **quote** Sends arguments, verbatim, to the remote FTP server. A single FTP reply code is expected in return. Quote is identical to literal. This command is followed by the parameter 'argument'. The argument specifies the argument to send to the FTP server.

The Syntax is

Exhibit 4.35. Syntax of "quote" command

```
quote argument[,,,]
```

The example is

Exhibit 4.36. Example of "quote" command

```
sysaxftp> quote  
Command line to send k  
sysaxftp>
```

4.7. Toggle Commands

4.7.1. Toggle Debugging Mode

The **debug** Toggles debugging. When debugging is on, each command sent to the remote computer is printed, preceded by the string --->. By default, debugging is off.

The Syntax is

Exhibit 4.37. Syntax of "debug" command

```
debug
```

The example is

Exhibit 4.38. Example of "debug" command

```
sysaxftp> debug
Debugging On .

sysaxftp> debug off
Debugging Off .
```

4.7.2. Toggle Metacharacter expansion of local file names

The **glob** Toggles filename globbing. Globbing permits use of wildcard characters in local file or path names. By default, globbing is on.

The Syntax is

Exhibit 4.39. Syntax of "glob" command

```
glob
```

The example is

Exhibit 4.40. Example of "glob" command

```
sysaxftp> glob
Globbing Off .

sysaxftp> glob on
Globbing On .
```

4.7.3. Toggle Printing '#' for each buffer transfer

The **hash** Toggles hash-sign (#) printing for each data block transferred. The size of a data block is 2048 bytes. By default, hash mark printing is off.

The Syntax is:

Exhibit 4.41. Syntax of "hash" command

```
hash
```

The example is:

Exhibit 4.42. Example of "hash" command

```
sysaxftp> hash
Hash mark printing On ftp: (2048 bytes/hash mark) .

sysaxftp>
```

4.7.4. Force Interactive prompting on Multiple Commands

The **prompt** Toggles prompting. Ftp prompts during multiple file transfers to allow you to selectively retrieve or store files; mget and mput transfer all files if prompting is turned off. By default, prompting is on.

The Syntax is

Exhibit 4.43. Syntax of "prompt" command

```
prompt
```

The example is

Exhibit 4.44. Example of "prompt" command

```
ftp> prompt
Interactive mode Off .

ftp> prompt on
Interactive mode On .
```

4.7.5. Toggle Packet Tracing

The **trace** Toggles packet tracing; trace displays the route of each packet when running an ftp command.

The Syntax is

Exhibit 4.45. Syntax of "trace" command

```
trace
```

The example is

Exhibit 4.46. Example of "trace" command

```
sysaxftp> trace  
Packet tracing On .  
  
sysaxftp> trace off  
Packet tracing Off .
```

4.7.6. Toggle Verbose Mode

The **verbose** Toggles verbose mode. If on, all ftp responses are displayed; when a file transfer completes, statistics regarding the efficiency of the transfer are also displayed. By default, verbose is on.

The Syntax is

Exhibit 4.47. Syntax of "verbose" command

```
verbose
```

The example is

Exhibit 4.48. Example of "verbose" command

```
sysaxftp> verbose  
Verbose mode Off .  
  
sysaxftp> verbose On  
Verbose mode On .
```

5

PGP Commands

5.1. Generating PGP key pairs	47
5.2. Keyrings and key management	48
5.3. Encrypting files with PGP	54
5.4. Decrypting PGP encrypted files	56

5.1. Generating PGP key pairs

The **sysaxftp.exe** console program can be used to generate a PGP key pair using the `-pgpkeygen` option. A new key pair is generated and stored in the default keyring. The username is a text string or email address that is linked with the generated key pair and is used to select the private or public key belonging to the key pair.

The Syntax is

Exhibit 5.1. Syntax of "-pgpkeygen" option

```
sysaxftp.exe -pgpkeygen <username or email>
```

The example is

Exhibit 5.2. Example of using "-pgpkeygen" option

```
ftp.exe -pgpkeygen john.doe@email.com
```

Transfers files to and from a computer running an FTP server service (sometimes called a daemon). Ftp can be used interactively.

```
FTP [-v] [-d] [-i] [-n] [-g] [-s:filename] [-a] [-w:window size] [-A]
[host]
```

-v	Suppresses display of remote server responses.
-n	Suppresses auto-login upon initial connection.
-i	Turns off interactive prompting during multiple file transfers.
-d	Enables debugging.
-g	Disables filename globbing (see GLOB command).
-s:filename	Specifies a text file containing FTP commands; the commands will automatically run after FTP starts.
-a	Use any local interface when binding data connection.
-A	login as anonymous.
-w:buffer size	Overrides the default transfer buffer size of 4096.
host	Specifies the host name or IP address of the remote host to connect to.

Notes:

- mget and mput commands take y/n/q for yes/no/quit.
- Use Control-C to abort commands.

5.2. Keyrings and key management

Public and private key files used for **PGP** encryption and decryption are stored in keyring files. The **Sysax FTP Automation** program maintains a default keyring. When a keyring file name is not explicitly specified, the default keyring is used. The **-pgexportpublickey** option is used to export a public key and the **-pgexportprivatekey** option is used to export a private key.

The Syntax is

Exhibit 5.3. Syntax of "-pgpexportpublickey" option

```
sysaxftp.exe -pgpexportpublickey <username or email> -pgpkeyout <output
filename> [-keyring <keyring file name>]
```

The example is

Exhibit 5.4. Example of using "-pgpexportpublickey" option

```
ftp.exe -pgpexportpublickey john.doe -pgpkeyout keyout.pub -keyring
mykeyring.pgp
```

Transfers files to and from a computer running an FTP server service (sometimes called a daemon). Ftp can be used interactively.

```
FTP [-v] [-d] [-i] [-n] [-g] [-s:filename] [-a] [-w:window size] [-A]
[host]
```

-v	Suppresses display of remote server responses.
-n	Suppresses auto-login upon initial connection.
-i	Turns off interactive prompting during multiple file transfers.
-d	Enables debugging.
-g	Disables filename globbing (see GLOB command).
-s:filename	Specifies a text file containing FTP commands; the commands will automatically run after FTP starts.
-a	Use any local interface when binding data connection.
-A	login as anonymous.
-w:buffer size	Overrides the default transfer buffer size of 4096.
host	Specifies the host name or IP address of the remote host to connect to.

Notes:

- mget and mput commands take y/n/q for yes/no/quit.
- Use Control-C to abort commands.

The Syntax is

Exhibit 5.5. Syntax of "-pgpexportprivatekey" option

```
sysaxftp.exe -pgpexportprivatekey <username or email> -pgpkeyout <output
filename> [-keyring <keyring file name>]
```

The example is

Exhibit 5.6. Example of using "-pgpexportprivatekey" option

```
ftp.exe -pgpexportprivatekey john.doe -pgpkeyout keyout.priv -keyring
mykeyring.pgp
```

Transfers files to and from a computer running an FTP server service (sometimes called a daemon). Ftp can be used interactively.

```
FTP [-v] [-d] [-i] [-n] [-g] [-s:filename] [-a] [-w:window size] [-A]
[host]
```

-v	Suppresses display of remote server responses.
-n	Suppresses auto-login upon initial connection.
-i	Turns off interactive prompting during multiple file transfers.
-d	Enables debugging.
-g	Disables filename globbing (see GLOB command).
-s:filename	Specifies a text file containing FTP commands; the commands will automatically run after FTP starts.
-a	Use any local interface when binding data connection.
-A	login as anonymous.
-w:buffer size	Overrides the default transfer buffer size of 4096.
host	Specifies the host name or IP address of the remote host to connect to.

Notes:

- mget and mput commands take y/n/q for yes/no/quit.
- Use Control-C to abort commands.

The **-pgpimportpublickey** option is used to import a previously exported public key or a public key from a user to whom a file or message needs to be sent.

The Syntax is

Exhibit 5.7. Syntax of "-pgpexportprivatekey" option

```
sysaxftp.exe -pgpexportprivatekey <username or email> -pgpkeyout <output
filename> [-keyring <keyring file name>]
```

The example is

Exhibit 5.8. Example of using "-pgpexportprivatekey" option

```
ftp.exe -pgpexportprivatekey john.doe -pgpkeyout keyout.priv -keyring
mykeyring.pgp
```

Transfers files to and from a computer running an FTP server service (sometimes called a daemon). Ftp can be used interactively.

```
FTP [-v] [-d] [-i] [-n] [-g] [-s:filename] [-a] [-w:window size] [-A]
[host]
```

-v	Suppresses display of remote server responses.
-n	Suppresses auto-login upon initial connection.
-i	Turns off interactive prompting during multiple file transfers.
-d	Enables debugging.
-g	Disables filename globbing (see GLOB command).
-s:filename	Specifies a text file containing FTP commands; the commands will automatically run after FTP starts.
-a	Use any local interface when binding data connection.
-A	login as anonymous.
-w:buffer size	Overrides the default transfer buffer size of 4096.
host	Specifies the host name or IP address of the remote host to connect to.

Notes:

- mget and mput commands take y/n/q for yes/no/quit.
- Use Control-C to abort commands.

The **-pgpimportprivatekey** option is used to import a previously exported private key.

The Syntax is

Exhibit 5.9. Syntax of "-pgpimportprivatekey" option

```
sysaxftp.exe -pgpimportprivatekey <private key filename> [-keyring
<keyring file name>]
```

The example is

Exhibit 5.10. Example of using "-pgpimportprivatekey" option

```
ftp.exe -pgpimportprivatekey key.priv -keyring mykeyring.pgp
```

Transfers files to and from a computer running an FTP server service (sometimes called a daemon). Ftp can be used interactively.

```
FTP [-v] [-d] [-i] [-n] [-g] [-s:filename] [-a] [-w:window size] [-A]
[host]
```

-v	Suppresses display of remote server responses.
-n	Suppresses auto-login upon initial connection.
-i	Turns off interactive prompting during multiple file transfers.
-d	Enables debugging.
-g	Disables filename globbing (see GLOB command).
-s:filename	Specifies a text file containing FTP commands; the commands will automatically run after FTP starts.
-a	Use any local interface when binding data connection.
-A	login as anonymous.
-w:buffer size	Overrides the default transfer buffer size of 4096.
host	Specifies the host name or IP address of the remote host to connect to.

Notes:

- mget and mput commands take y/n/q for yes/no/quit.
- Use Control-C to abort commands.

The **pgpexportpublic** and **pgpexportprivate** commands can be used to export public and private keys from within a script.

The **pgpresult** predefined status flag is set to the predefined constant success if the corresponding command completed successfully.

The Syntax is

Exhibit 5.11. Syntax of "pgpexportpublic" option

```
pgpexportpublic <username or email>, <output filename>, [<optional keyring  
file>];
```

The Syntax is

Exhibit 5.12. Syntax of "pgpexportprivate" option

```
pgpexportprivate <username or email>, <output filename>, [<optional  
keyring file>];
```

The **pgpimportpublic** and **pgpimportprivate** can be used to import public and private keys from within a script.

The **pgpresult** predefined status flag is set to the predefined constant success if the corresponding command completed successfully.

The Syntax is

Exhibit 5.13. Syntax of "pgpimportpublic" option

```
pgpimportpublic <key file to import>, [<optional keyring file>];
```

The Syntax is

Exhibit 5.14. Syntax of "pgpimportprivate" option

```
pgpimportprivate <key file to import>, [<optional keyring file>];
```

5.3. Encrypting files with PGP

The **sysaxftp.exe** program can be used to encrypt files using the **-pgpencrypt** option. If a keyring file name is not explicitly specified, the default keyring is used to obtain the public key used for encryption. The **-pgparmor** option is used to convert the encrypted binary file into an ascii text format. The **-pgpsign** option also can be used to sign the encrypted file using the private key of the sender to establish the source of the encrypted file.

The Syntax is

Exhibit 5.15. Syntax of "-pgpencrypt" option

```
sysaxftp.exe -pgpencrypt <file to encrypt> -pgpkeyid <username or email>  
[-pgparmor] [-pgpout <output filename>] [-keyring <keyring file name>]  
[-pgpsign <username or email>] [-pgppassphrase <private key passphrase>]  
[-signkeyring <keyring file name>]
```

The example is

Exhibit 5.16. Example of using "-pgpencrypt" option

```
ftp.exe -pgpencrypt myfile.txt -pgpkeyid john.doe
```

Transfers files to and from a computer running an FTP server service (sometimes called a daemon). Ftp can be used interactively.

```
FTP [-v] [-d] [-i] [-n] [-g] [-s:filename] [-a] [-w:windowsize] [-A]
[host]
```

-v	Suppresses display of remote server responses.
-n	Suppresses auto-login upon initial connection.
-i	Turns off interactive prompting during multiple file transfers.
-d	Enables debugging.
-g	Disables filename globbing (see GLOB command).
-s:filename	Specifies a text file containing FTP commands; the commands will automatically run after FTP starts.
-a	Use any local interface when binding data connection.
-A	login as anonymous.
-w:bufferize	Overrides the default transfer buffer size of 4096.
host	Specifies the host name or IP address of the remote host to connect to.

Notes:

- mget and mput commands take y/n/q for yes/no/quit.
- Use Control-C to abort commands.

The **pgpencrypt** command can be used to encrypt files from within a script. The `pgpresult` predefined status flag is set to the predefined constant `success` if the corresponding command completed successfully. If an empty string is passed in for the output filename, it will be derived from the input filename.

The Syntax is**Exhibit 5.17. Syntax of "-pgpencrypt" option**

```
pgpencrypt <file to encrypt>, <username or email>, <output filename>,
[<keyring file name>];
```

The **pgparmoron** or **pgparmoroff** commands can be called before the **pgpencrypt** command to enable or disable the conversion of the encrypted binary file into an ascii text format.

The Syntax is

Exhibit 5.18. Syntax of "pgparmoron" option

```
pgparmoron;
```

The Syntax is

Exhibit 5.19. Syntax of "pgparmoroff" option

```
pgparmoroff;
```

The **pgpsign** command can be called before the **pgpencrypt** command to sign the encrypted file using the private key of the sender to establish the source of the encrypted file.

The Syntax is

Exhibit 5.20. Syntax of "pgpsign" option

```
pgpsign <username or email>, <private key passphrase>, [<keyring file  
name>];
```

5.4. Decrypting PGP encrypted files

The **sysaxftp.exe** program can be used to decrypt files using the **-pgpdecrypt** option. If a keyring file name is not explicitly specified, the default keyring is used to obtain the private key used for decryption.

The Syntax is

Exhibit 5.21. Syntax of "-pgpdecrypt" option

```
sysaxftp.exe -pgpdecrypt <encrypted file> -pgpkeyid <username or email>
-pgppassphrase <private key passphrase> [-pgpout <output filename>]
[-keyring <keyring file name>]
```

The example is

Exhibit 5.22. Example of using "-pgpdecrypt" option

```
ftp.exe -pgpdecrypt decrypted.pgp -pgpkeyid john.doe -pgppassphrase
mypass;
```

Transfers files to and from a computer running an FTP server service (sometimes called a daemon). Ftp can be used interactively.

```
FTP [-v] [-d] [-i] [-n] [-g] [-s:filename] [-a] [-w:window size] [-A]
[host]
```

-v	Suppresses display of remote server responses.
-n	Suppresses auto-login upon initial connection.
-i	Turns off interactive prompting during multiple file transfers.
-d	Enables debugging.
-g	Disables filename globbing (see GLOB command).
-s:filename	Specifies a text file containing FTP commands; the commands will automatically run after FTP starts.
-a	Use any local interface when binding data connection.
-A	login as anonymous.
-w:buffer size	Overrides the default transfer buffer size of 4096.
host	Specifies the host name or IP address of the remote host to connect to.

Notes:

- mget and mput commands take y/n/q for yes/no/quit.
- Use Control-C to abort commands.

The **spgpdecrypt** command can be used to decrypt files from within a script. The `pgpresult` predefined status flag is set to the predefined constant `success` if the corresponding command completed successfully. If an empty string is passed in for the output filename, it will be derived from the encrypted input file.

The Syntax is

Exhibit 5.23. Syntax of "-pgpdecrypt" option

```
pgpdecrypt <file to encrypt>, <username or email>, <private key  
passphrase>, <output filename>, [<keyring file name>];
```

6

Other Using Commands

6.1. Running Command	60
6.2. Changing Directory Commands	60
6.3. User Commands	62

6.1. Running Command

The **!** Runs the specified command on the local computer. It is followed the parameter 'command'. The 'command' specifies the command to run on the local computer. If command is omitted, the local command prompt is displayed.

The Syntax is

Exhibit 6.1. Syntax of "!" command

```
! [command]
```

The example is

Exhibit 6.2. Example of "!" command

```
sysaxftp> ! cd  
C:\Documents and Settings\user
```

6.2. Changing Directory Commands

6.2.1. Change Remote Working directory

The **cd** Changes the working directory on the remote computer. In this command is followed by the parameter 'remoter-directory'. The parameter remote-directory specifies the directory on the remote computer to change to.

The Syntax is

Exhibit 6.3. Syntax of "cd" command

```
cd remote-directory
```

The example is

Exhibit 6.4. Example of "cd" command

```
sysaxftp> cd

CWD /
250 Path changed to "/"
PWD
257 "/" is current path

sysaftp>
```

6.2.2. Change Local Working directory

The **lcd** Changes the working directory on the local computer. By default, the working directory is the directory in which ftp was started. This command is followed by the parameter is 'directory'. The directory specifies the directory on the local computer to change to. If directory is not specified, the current working directory on the local computer is displayed.

The Syntax is

Exhibit 6.5. Syntax of "lcd" command

```
lcd [directory]
```

The example is

Exhibit 6.6. Example of "lcd" command

```
sysaxftp> lcd  
  
Local directory is C:\Program Files\SysaxAutomation  
  
sysaxftp>
```

6.3. User Commands

6.3.1. Send New User Information

The **user** Displays descriptions for ftp commands. User is identical to help. This command is followed by the parameter 'command'. The command specifies the name of the command about which you want a description. If command is not specified, ftp displays a list of all commands.

The Syntax is

Exhibit 6.7. Syntax of "user" command

```
user [command]
```

The example is

Exhibit 6.8. Example of "user" command

```
sysaxftp> open system3  
220-Sysax Multi Server Service (version 4)  
220  
User:star  
USER star  
331 User name okay,need password
```

6.3.2. Connect to remote tftp

The **open** Displays descriptions for ftp commands. open is identical to help. This command is followed by the parameter 'Command'. The command specifies the name of the command about which you want a description. If command is not specified, ftp displays a list of all commands.

The Syntax is

Exhibit 6.9. Syntax of "open" command

```
open command
```

The example is

Exhibit 6.10. Example of "open" command

```
sysaxftp> open system3
220-Sysax Multi Server Service (version 4)
220
User:
```

6.3.3. Print Local help Information

The **?** Displays descriptions for ftp commands. ? is identical to help. It is followed by the parameter 'command'. The 'command' specifies the name of the command about which you want a description. If command is not specified, ftp displays a list of all commands.

The Syntax is

Exhibit 6.11. Syntax of "?" command

```
? [command]
```

The example is

Exhibit 6.12. Example of "?" command

```
sysaxftp> ? help  
  
help          Print local help information
```

6.3.4. Print Local help Information

The **help** Displays descriptions for ftp commands. This command is followed by the parameter 'command'. The command specifies the name of the command about which you want a description. If command is not specified, ftp displays a list of all commands.

The Syntax is

Exhibit 6.13. Syntax of "help" command

```
help [command]
```

The example is

Exhibit 6.14. Example of "help" command

```
sysaxftp> help append  
  
append          Append to a file
```

6.3.5. Get help from remote server

The **remotehelp** Displays help for remote commands. This command is followed by the parameter 'Command'. The command specifies the name of the command about which you want help. If command is not specified, ftp displays a list of all remote commands.

The Syntax is

Exhibit 6.15. Syntax of "remotehelp" command

```
remote filename newfilename
```

Index

Symbols

!, 60
?, 63

A

append, 17
ascii, 17

B

bell, 17
bye, 36

C

cd, 60
close, 36

D

debug, 41
delete, 26
dir, 29
disconnect, 37, 38

G

get, 21
glob, 42

H

hash, 43
help, 64

L

lcd, 61
literal, 40
ls, 31

M

mdelete, 26
mdir, 30
mget, 19

mkdir, 39
mls, 32
mput, 20

O

open, 63

P

prompt, 44
put, 22
pwd, 35

Q

quit, 38
quote, 41

R

recv, 23
remotehelp, 64
rename, 28
rmdir, 27

S

send, 33
status, 34

T

trace, 44
type, 19

U

user, 62

V

verbose, 45