

Sysax Multi Server: Setting up public key authentication

Table of Contents

1. Sysax Multi Server: Setting up public key authentication	1
---	---

1

Sysax Multi Server: Setting up public key authentication

Public key authentication is supported for **SSH** based protocols such as **SFTP** or **secure shell** and enables client software to authenticate using a private key instead of a password. The basic concept is that the client generates a public and private key pair. The client then provides the public key to the system administrator who maintains the server. This public key is then installed in the client user's account. Once installed, the client can authenticate to the server and login to their account using just their private key instead of having to supply a password.

Many software programs can be used to generate the public and private key pair. This document demonstrates the generation of the key pair using the **puttygen** program.

1. Open the puttygen.exe program and click on the generate button to generate the public and private key pair.

Figure 1.1. Run puttygen.exe

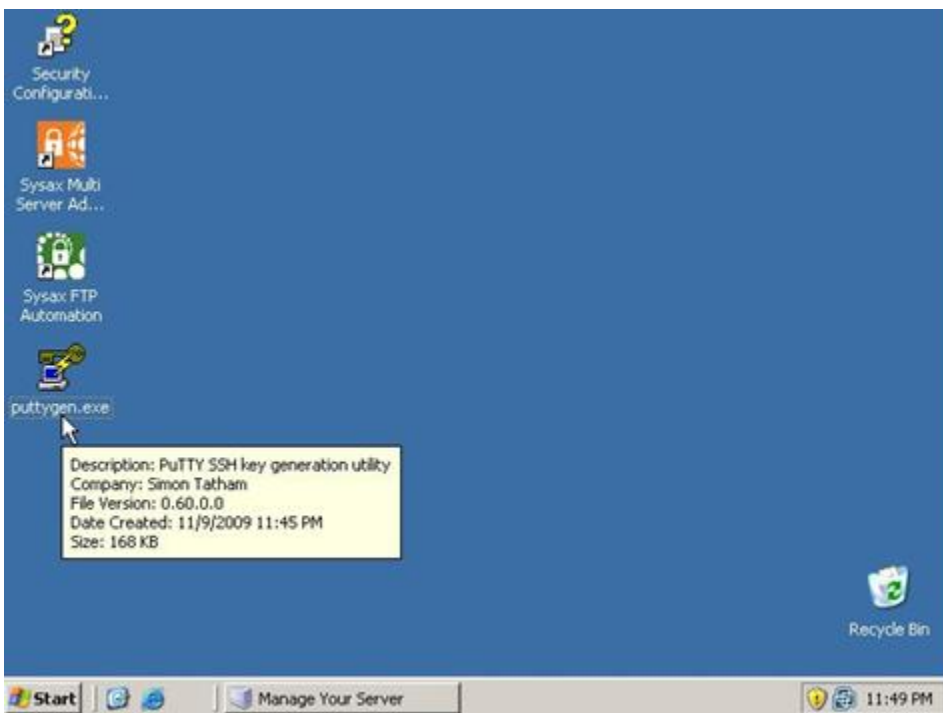


Figure 1.2. PuTTY Key Generator

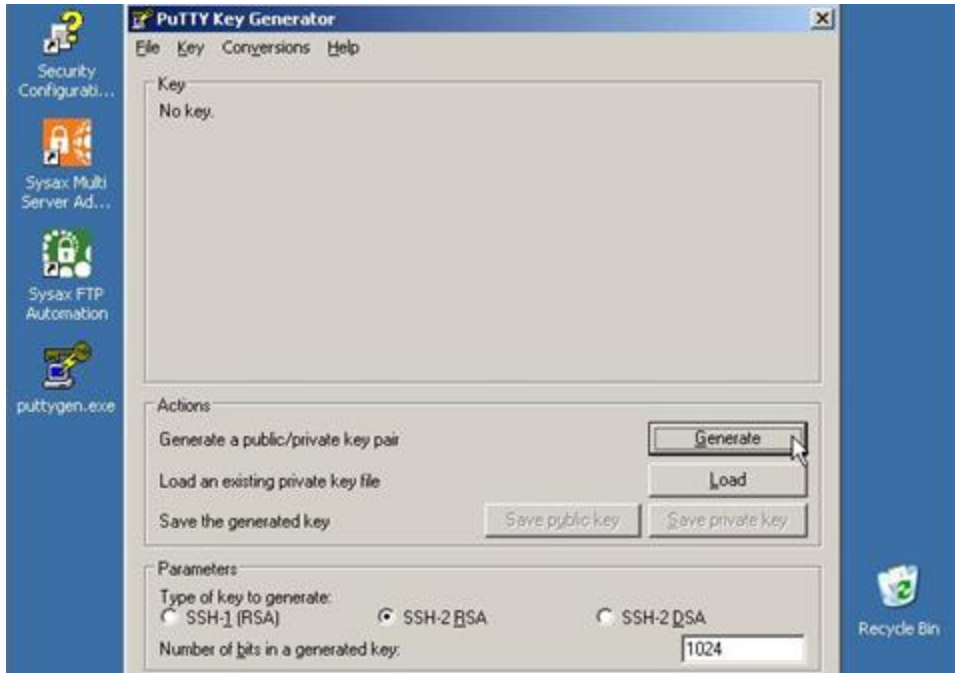
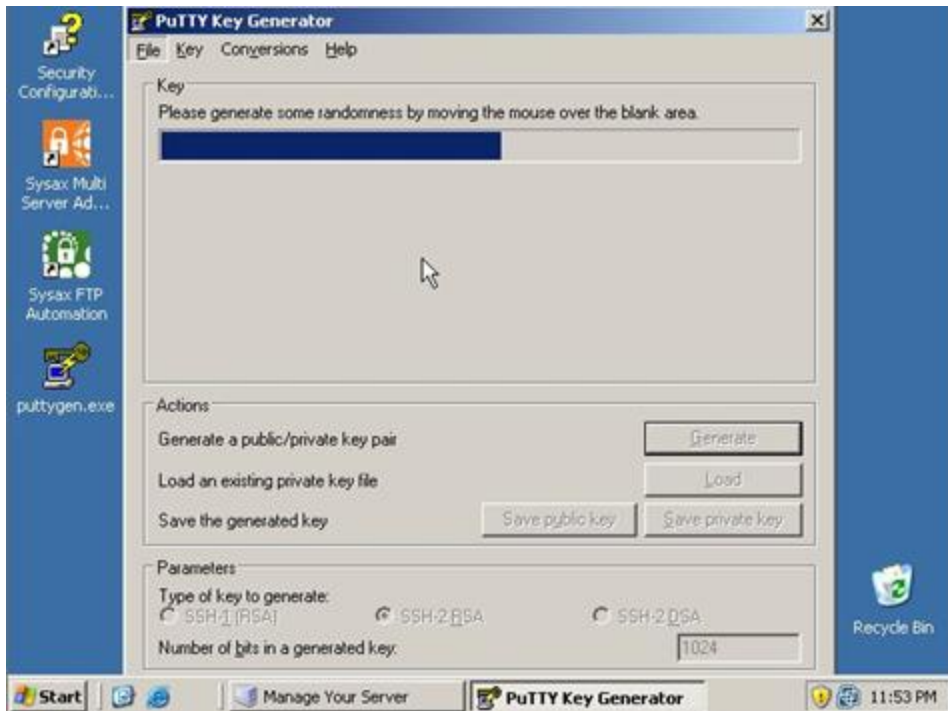


Figure 1.3. PuTTY Key Generator

2. The public key that is displayed on the program window should be copied to a text file and saved. The private key must then be saved and imported into the client program that will connect to the server. There are 3 formats that the private key can be stored in. You can click on the "Save private key" button and save it in the default ppk format. You can also select "Conversions->Export OpenSSH key" to save it in the openssh format or select "Conversions->Export ssh.com key" to save it in the ssh format.

Figure 1.4. PuTTY Key Generator

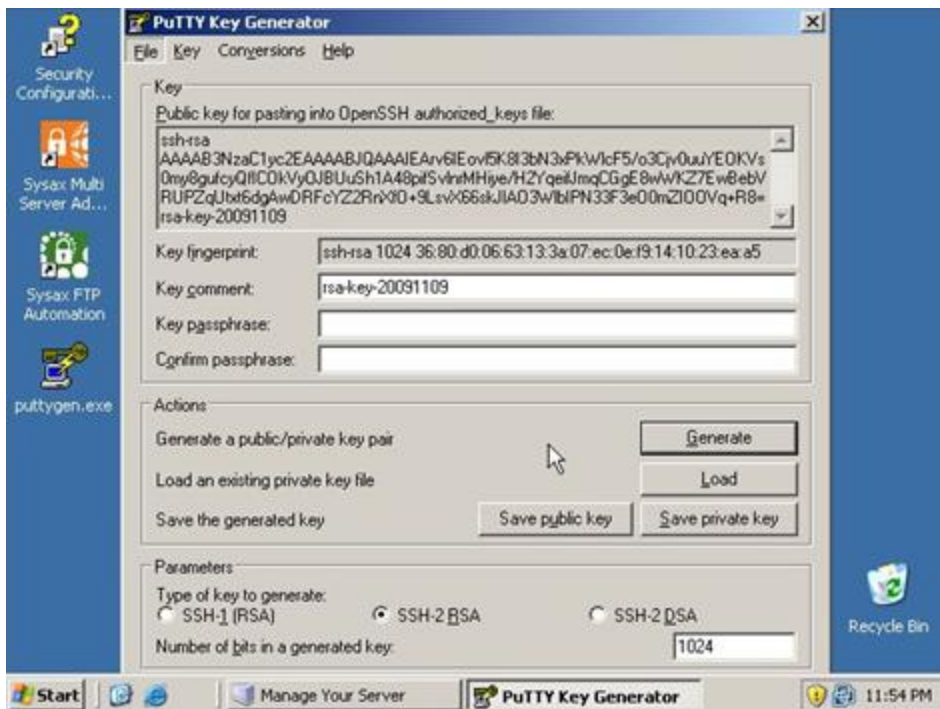


Figure 1.5. PuTTY Key Generator

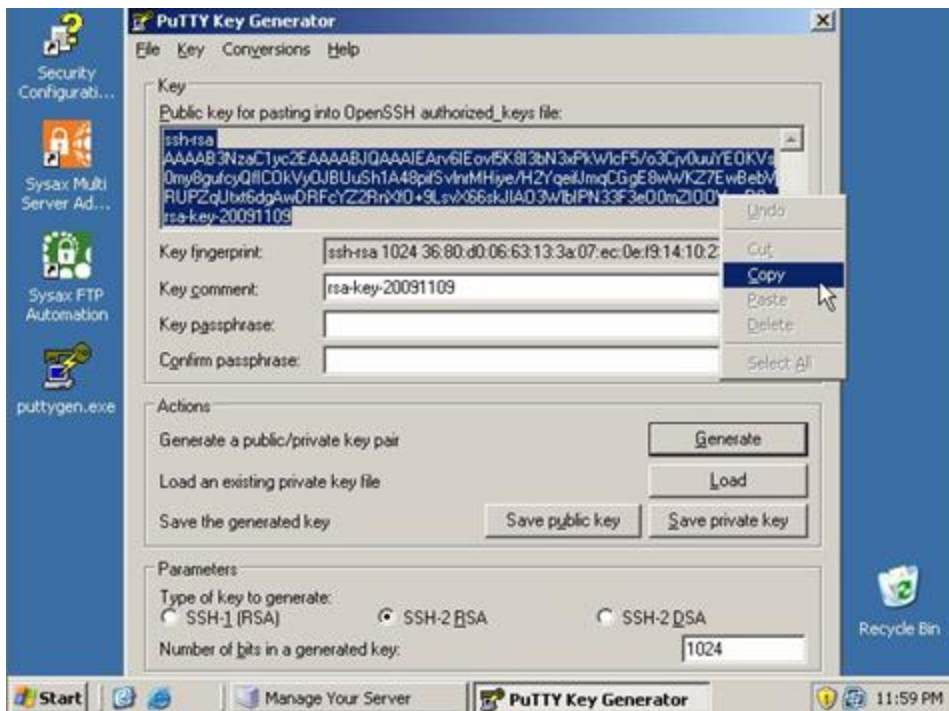


Figure 1.6. Paste Contents

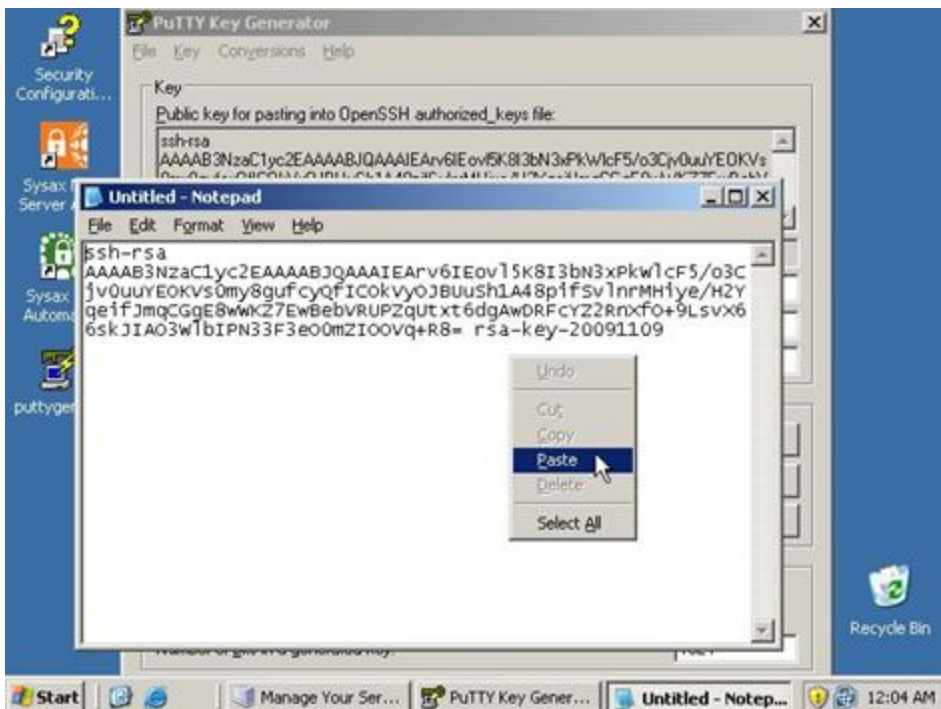
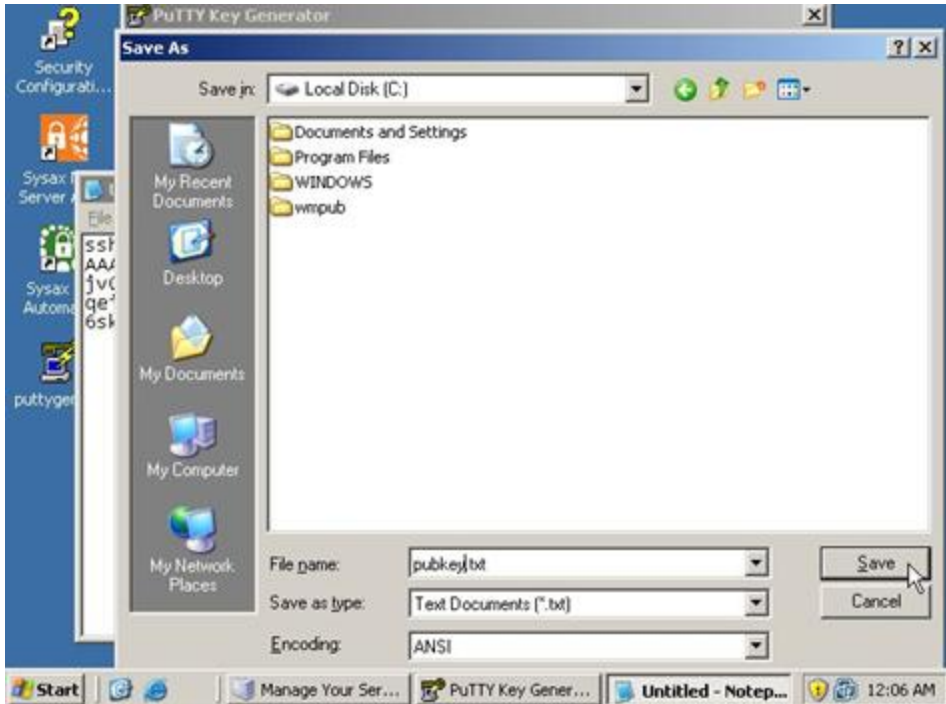


Figure 1.7. Save Text Document



3. The public key file is then installed in the client user's account. This will enable the client software to login to the account without a password, using only the private key that corresponds to the public key that is installed on the server.

Figure 1.8. Sysax Account Manager Window

