

Exporting SSL certificate for use in Sysax Multi Server

Table of Contents

1. Exporting SSL certificate for use in Sysax Multi Server	1
--	---

1

Exporting SSL certificate for use in Sysax Multi Server

SSL Certificates issued by a third party certification authority (CA) such as Verisign can be used in place of the default self signed ssl certificate. This document describes how to export an SSL certificate from the windows certificate manager.

1. Open the Certificate manager and select the certificate that needs to be exported.

Figure 1.1. Run Certificate Manager

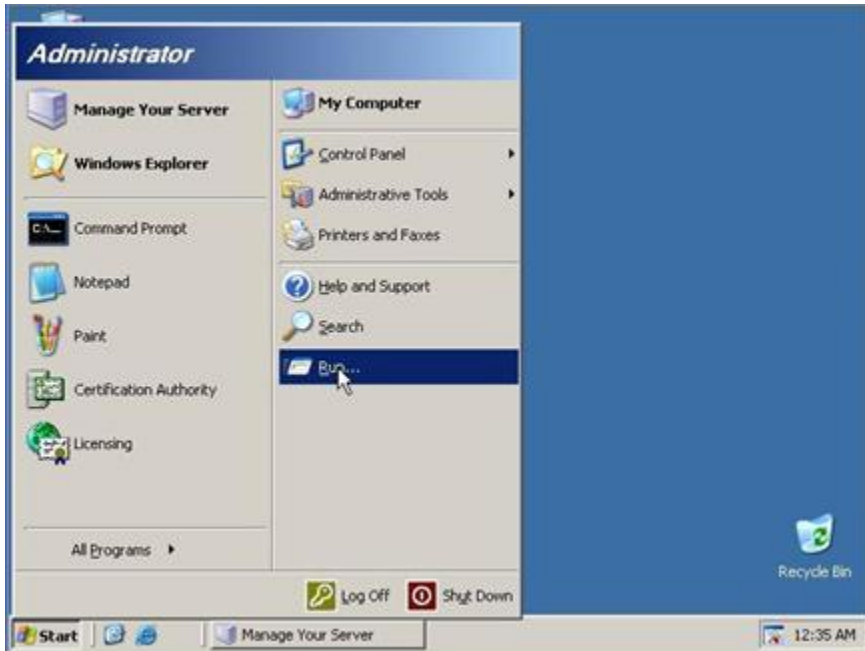


Figure 1.2. Open Certificate Manager

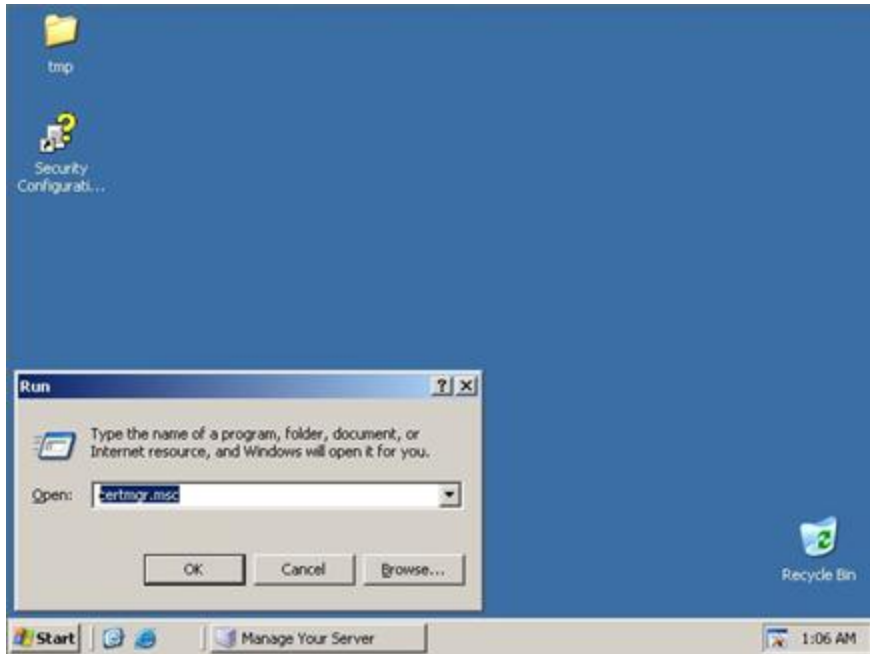
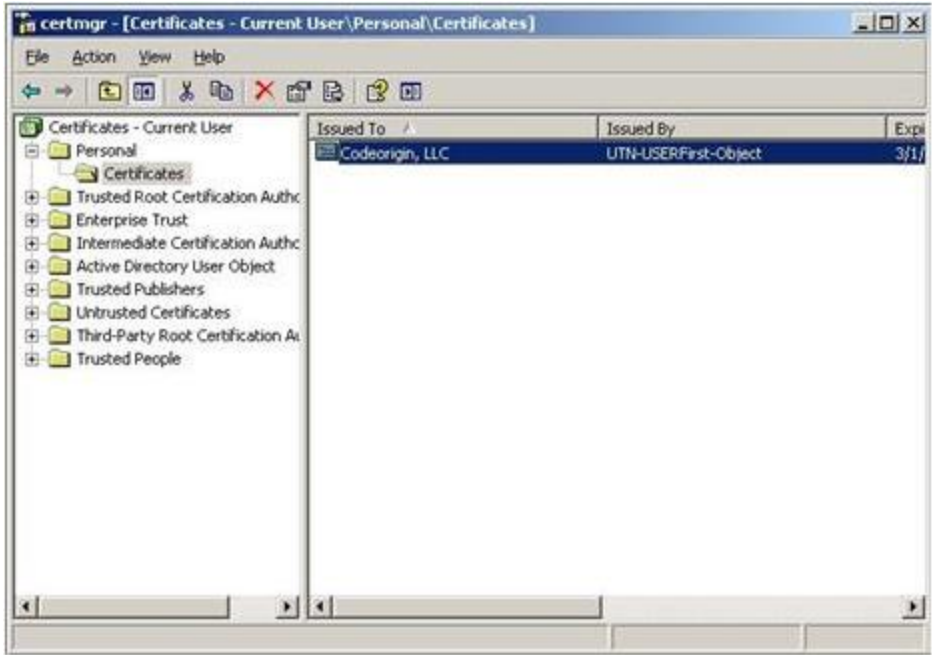
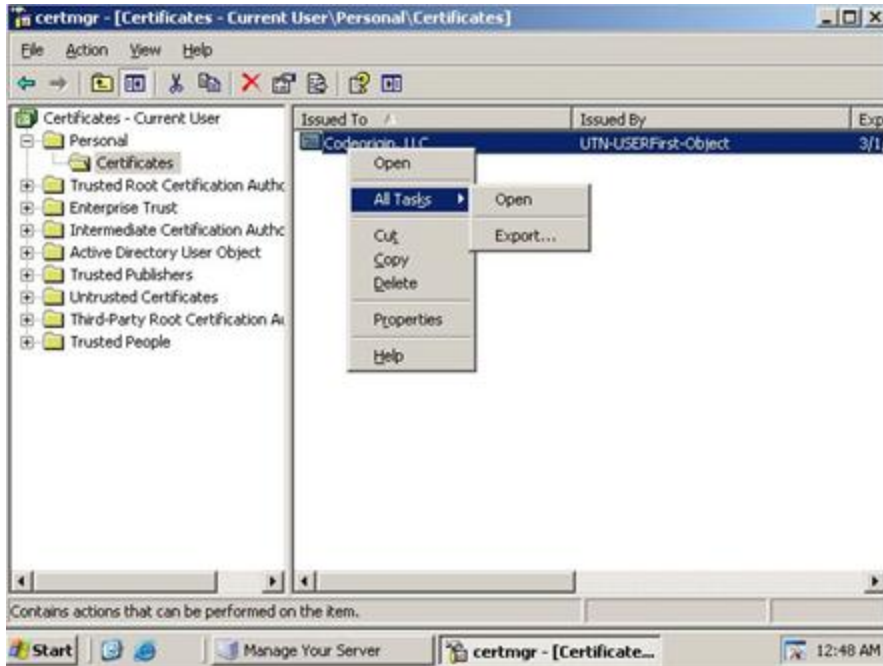


Figure 1.3. Export Certificate



2. Right click on the selected certificate and select the "Export" submenu item from the "All Tasks" menu item.

Figure 1.4. Export SSL Certificate

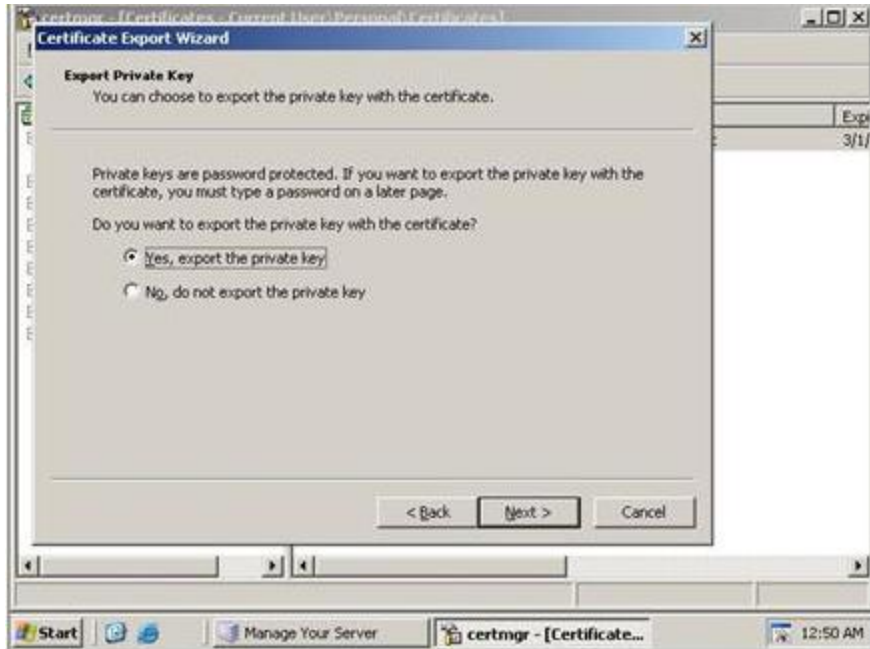


3. Go to the next screen of the certificate export wizard. Make sure to select the "Yes, export the private key" option.

Figure 1.5. Certificate Export Wizard

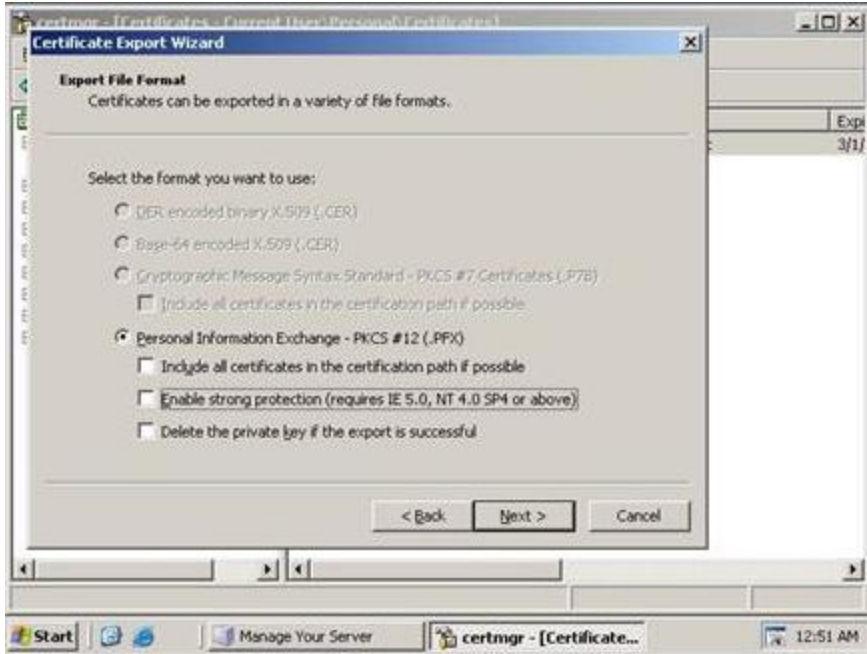


Figure 1.6. Certificate Export Wizard



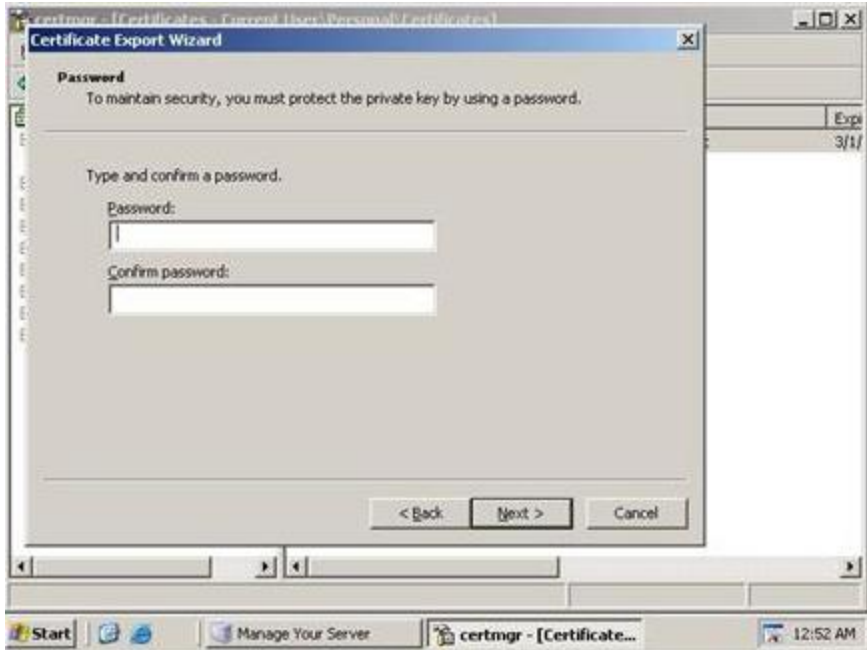
4. Unselect all the options in this screen.

Figure 1.7. Certificate Export Wizard



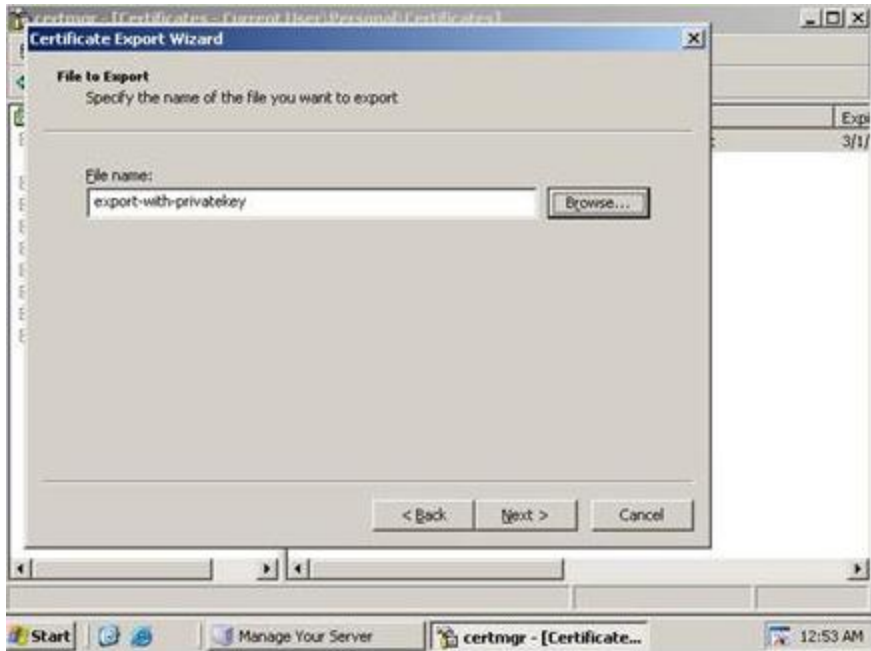
5. Leave the password for the private key empty.

Figure 1.8. Certificate Export Wizard



6. Specify a name for the exported key file.

Figure 1.9. Certificate Export Wizard



7. Finish the wizard. The exported key will be saved in pfx format. This exported SSL certificate can now be used in Sysax Multi server in place of the default self-signed SSL certificate.

Figure 1.10. Certificate Export Wizard



Figure 1.11. Certificate Export Wizard



Figure 1.12. Export SSL Certificate

